

I Kyoto Today

2. Economic Indicators

(1) GDP and Economic Growth Rate

The nominal and real GDP of Kyoto Prefecture has developed in a cyclical peak since 2000, with the figure having gradually decreased until recently when it began to improve.²¹ The GDP in Kyoto Prefecture was the thirteenth highest in Japan in 2005. The Economic Growth of Kyoto Prefecture mirrors the increase and decrease throughout the country as a whole. In 2005, the growth of 1.4% was the 21st place in Japan.²²

GDP of Kyoto Pref. (As of fiscal year 2006) (million yen)

Prefecture	GDP	Rank	Ratio (%)
Kyoto	10,236,070	13	2.0
Osaka	38,808,582	2	7.5
Hyogo	19,646,656	6	3.8
Tokyo	92,277,127	1	17.8
Japan	518,824,080	-	100.0

1. GDP in Prefectures, "Prefectural Accounts in 2006", Cabinet Office

GDP of Kyoto Pref. and City of Kyoto (million yen)

	2004		2005	
	GDP	Ratio(%)	GDP	Ratio(%)
Kyoto Pref.	9,887,944	-	10,029,686	-
City of Kyoto	5,976,092	61.6%	6,005,863	61.1%

1. GDP in Prefectures, "Prefectural Accounts in 2006", Cabinet Office

"Municipal Income Per Capita", City of Kyoto

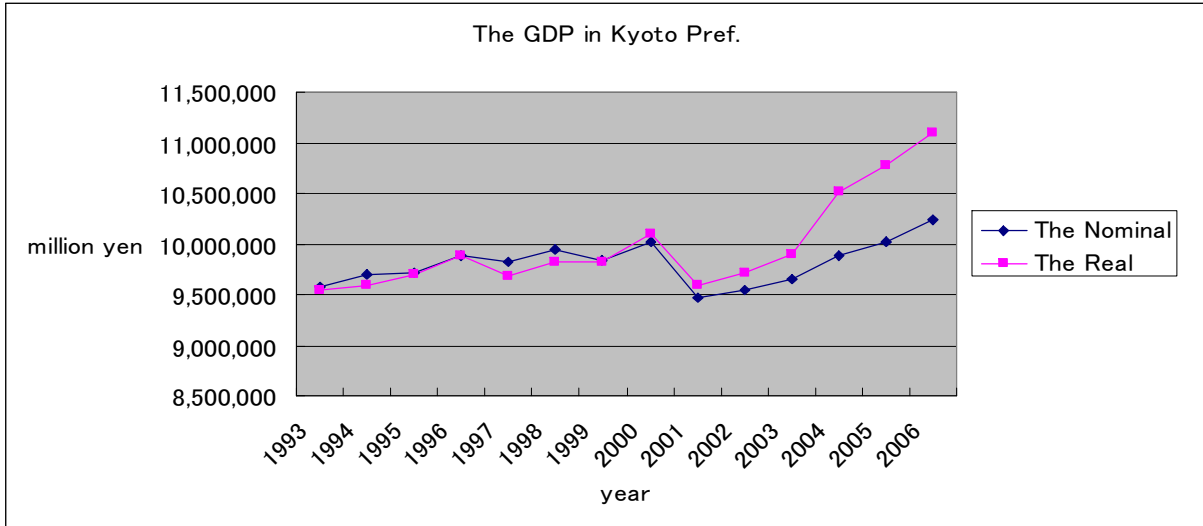
The Economic Growth (As of 2006)

Prefs.	Economic Growth	Ranking
Kyoto	3.4%	5
Tokyo	0.9%	20
Osaka	0.6%	26
Hyogo	2.6%	7
Japan	1.0%	-

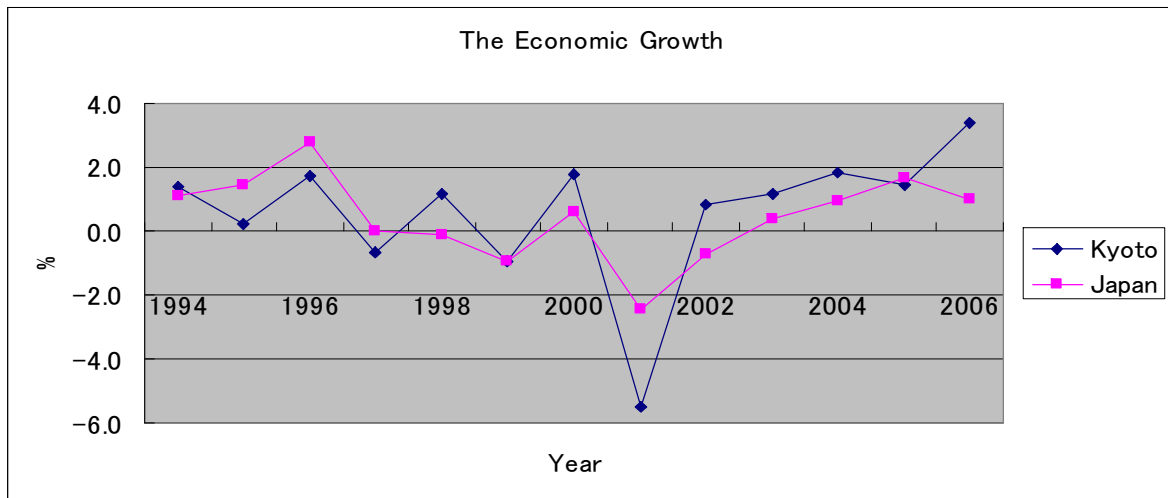
1. GDP in Prefectures, "Prefectural Accounts in 2006", Cabinet Office

²¹ GDP & Economic Growth in Kyoto (1990-2003), "Statistics of Kyoto", Statistic Division, Kyoto Prefectural Government

²² "Prefectural Accounts in 2006", Cabinet Office



3-2 Distribution of Prefectural Income, "Data Series, 2006" Kyoto Prefectural Government



1. GDP in Prefectures, "Prefectural Accounts in 2006", Cabinet Office

(2) Prefectural Income

In 2001, Kyoto's prefectural income was recorded at 7,338 trillion yen. This was the cyclical peak, as in 2006, it dropped to 7,863 trillion yen.²³

In detail, 67.3% of the income came from employment income, 1.8% from assets income and 30.8% from corporate profits.²⁴

The Comparison of Per-Capita Prefectural Income (As of 2006)

Prefs.	Per-Capita Income(thousand yen)	Rank
Kyoto	2,976	11
Osaka	3,083	9
Hyogo	2,882	16
Tokyo	4,820	1
Japan	3,069	-

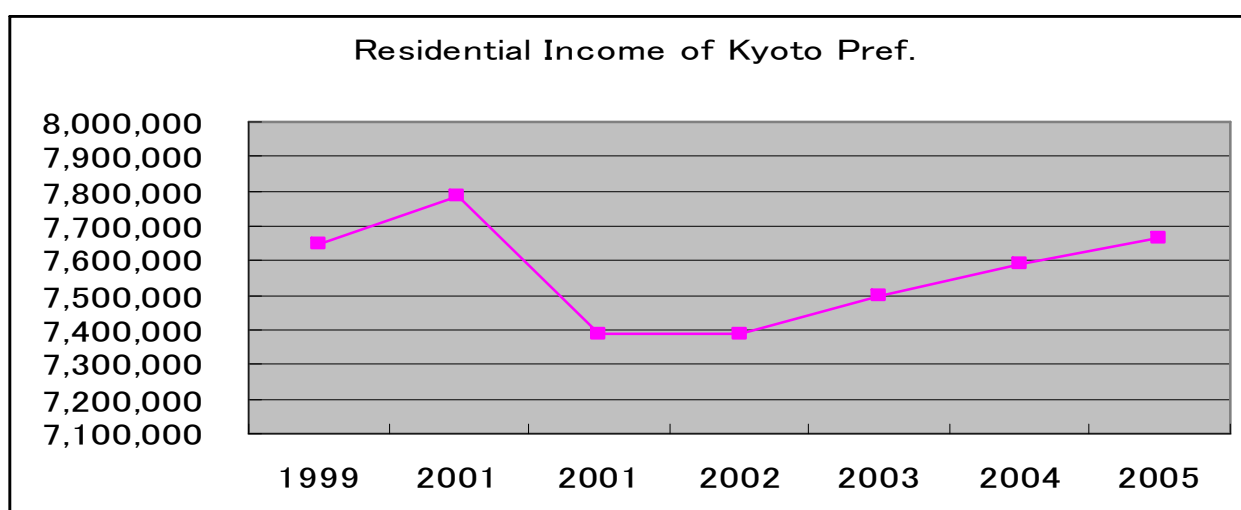
C Economic fundamentals, "Survey of Prefectures"

Residential Income of Kyoto Pref. and City of Kyoto

	2004		2005	
	Income(million yen)	Ratio(%)	Income (million yen)	Ratio(%)
Kyoto Pref.	7,516,999	-	7,665,004	-
City of Kyoto	4,310,181	57.4%	4,355,370	56.8%

3-2 Distribution of Prefectural Income, "Data Series, 2006" Kyoto Prefectural Government

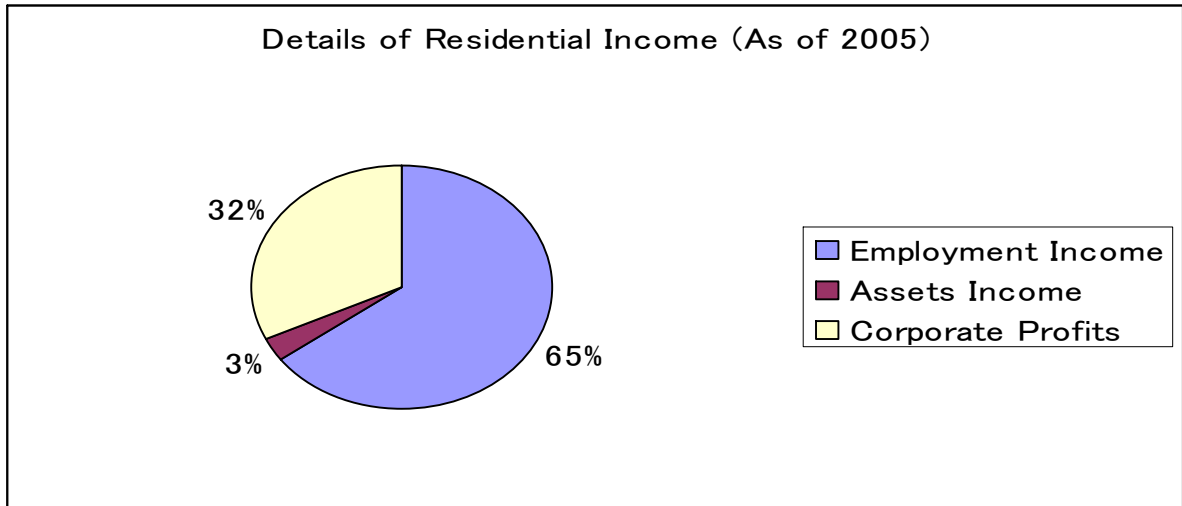
2 Distribution of Prefectural Income, "Prefectural Accounts in 2005", Cabinet Office



²³ 3-2 Distribution of Prefectural Income, "Data Series, 2006" Kyoto Prefectural Government

²⁴ 2 Distribution of Prefectural Income, "Prefectural Accounts in 2006", Cabinet Office

2 Distribution of Prefectural Income, "Prefectural Accounts in 2005", Cabinet Office



2 Distribution of Prefectural Income, "Prefectural Accounts in 2005", Cabinet Office

(3) Consumer Price Index

The Consumer Price Index in Kyoto has been decreasing since 1999. The index for furnishings, household articles, and articles for culture and amusement have decreased in particular. In contrast, the index for insurance, medical treatment, and education has tended to increase.²⁵ If the consumer price index in 23 wards of Tokyo Prefecture equals “100”, the index for Kyoto Prefecture occupies fourth place in Japan (third place for food). As such, price levels in Kyoto are generally higher than in other areas.

*Kyoto Prefecture does not possess data other than the price index of food. Other indices are recorded by the City of Kyoto.

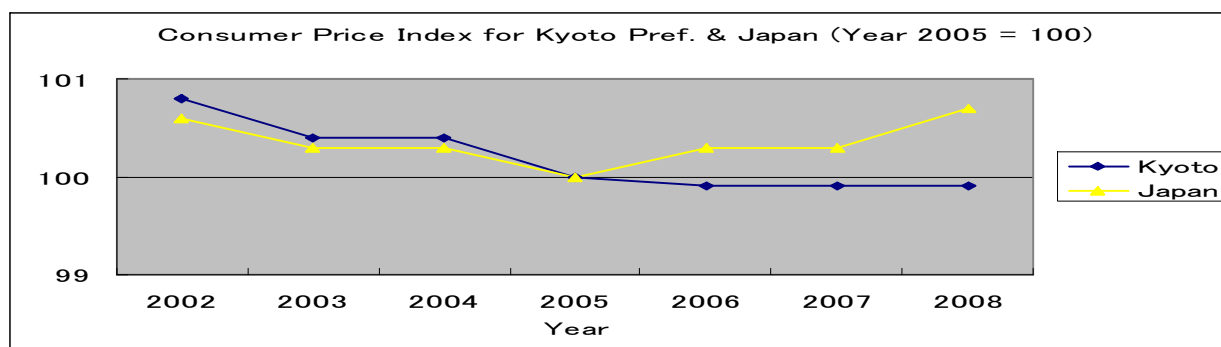
The Comparison of Consumer Price Index (As of Year 2007)

Prefs.	Grand Total 23 Wards = 100		Food Tokyo 23 Wards = 100	
	Index	Rank	Index	Rank
Kyoto	95.6	4	99.0	3
Osaka	96.6	3	97.9	4
Hyogo	93.7	10	96.5	8
Tokyo	100.0	1	100.0	1
Japan	90.1	-	92.4	-

Details of Consumer Price Index (City of Kyoto, Year 2005 = 100)

	Grand Total	Food	Housing	Light, Heat, Water	Furniture, Housework Articles	Clothes, Shoes	Insurance, Medical Treatment	Transportation, Communication	Education	Culture, Amusement	Others
Oct 2008	99.9	100.9	98.4	101.7	97.4	99.9	100.1	99.9	101.0	98.1	101.9

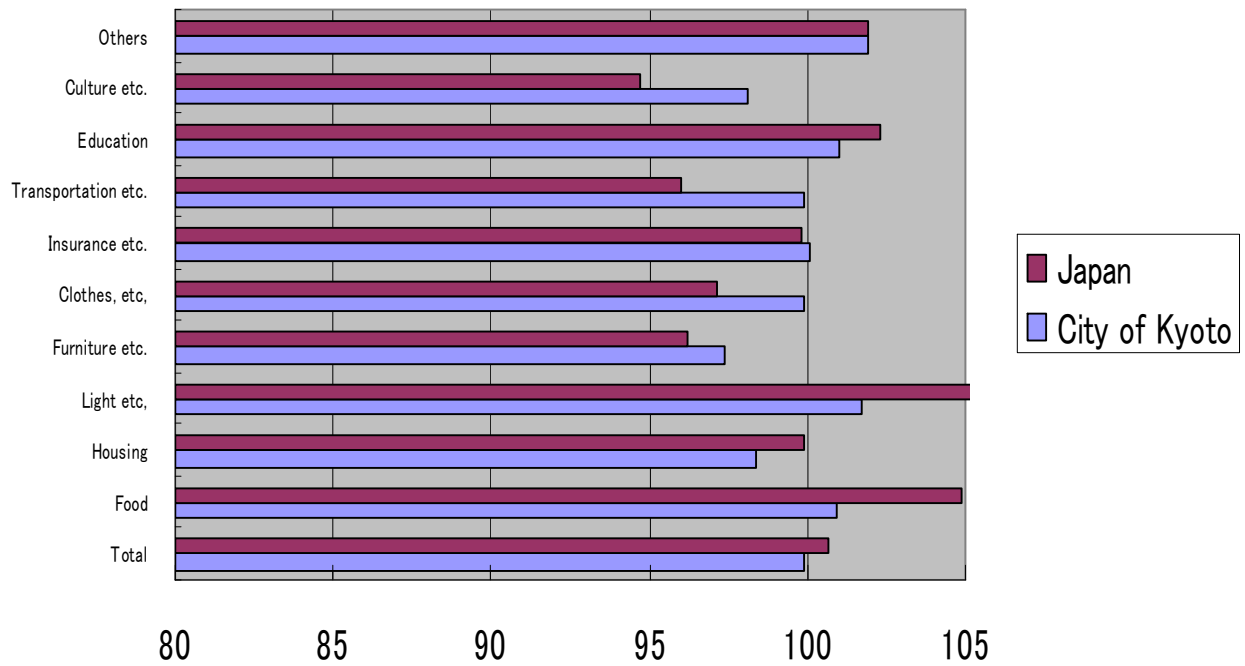
10. Flash Data of Consumer Price Index in Kyoto (As of Oct. 2006), “Statistics of Kyoto”, Statistic Division, Kyoto Prefectural Government



10. Flash Data of Consumer Price Index in Kyoto, “Statistics of Kyoto”, Statistic Division, Kyoto Prefectural Government

²⁵ 15-1 Consumer Price Index in City of Kyoto, “Data Series, 2006” Kyoto Prefectural Government

Consumer Price Index (City of Kyoto & Japan, 2005)



Consumer Price Index in Kyoto (As of Oct. 2006), "Statistics of Kyoto",
Statistic Division, Kyoto Prefectural Government

"Consumer Price Index Annual Report in 2005", Statistic Bureau, Ministry of General Affairs

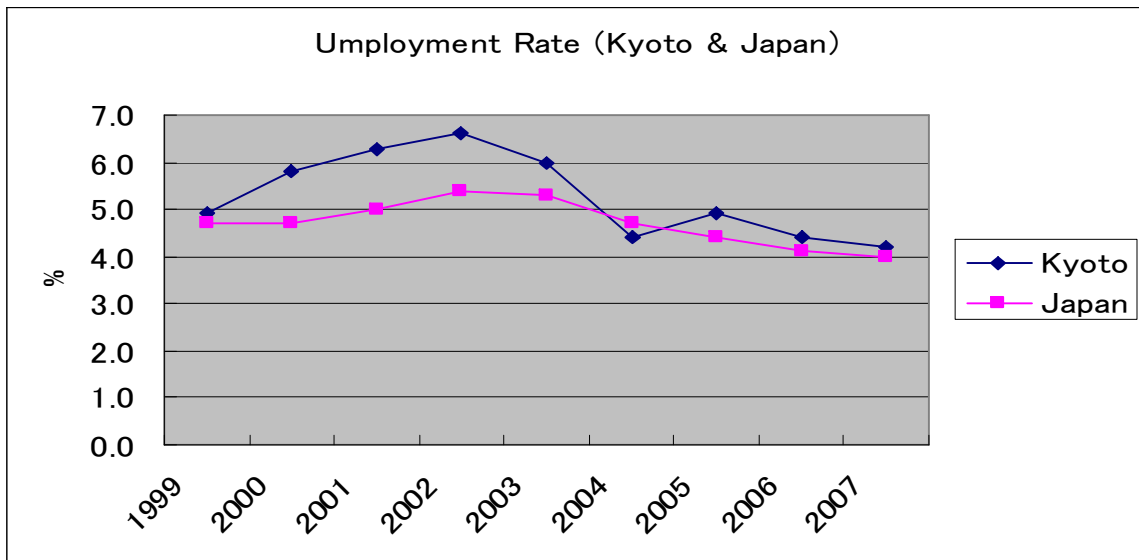
(4) Trends of Employment

The unemployment rate in Kyoto Prefecture had risen up until 2002, when it reached 6.5%. It has since decreased to 4.0% by 2007.²⁶ In detail, the unemployment rate for ‘Ages 15~24 in Kyoto’ is under the national average. By contrast, the rates for ‘Ages 25~34’ and ‘Age 55 and above’ record over the national average.

Trend of Employment (Year 2007) *thousand people

Pref.	Population Age 15 or Over* (A)	Not in Labor Force* (B)	Labor Force* (C)	Employed Persons *(D)	Unemployed Persons* (E)	Unemployment Rate(F)	Rank
Kyoto	2,288	963	1,323	1,267	56	4.2%	40
Osaka	7,605	3,251	4,351	4,120	231	5.3%	45
Hyogo	4,809	2,059	2,749	2,637	112	4.1%	37
Tokyo	11,337	4,176	7,158	6,995	273	3.8%	27
Japan	110,487	43,859	66,592	64,008	2,582	4.0%	-

“Labor Force Statistics”, Statistics Bureau, Ministry of General Affairs



Estimate Annual Average of Unemployment Rate 1997-2005,

“Labor Force Statistics”, Statistics Bureau, Ministry of General Affairs

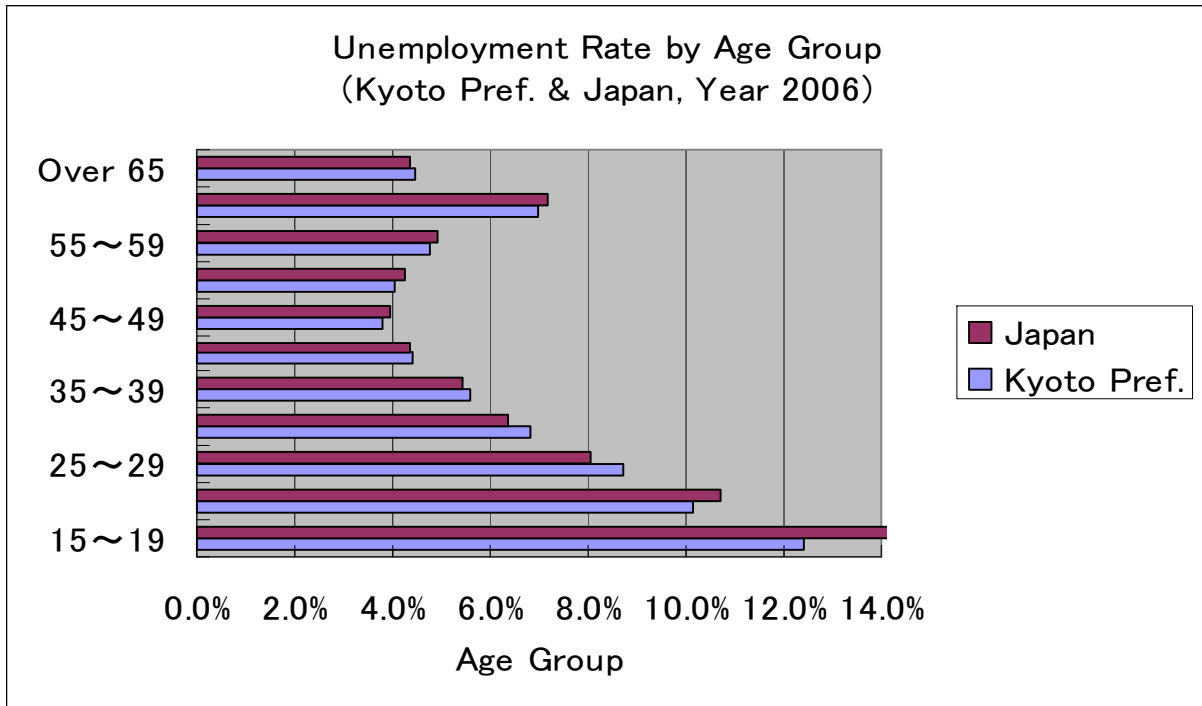
²⁶ Labor Force by Age Group over 15, “Data Series, 2004” Kyoto Prefectural Government

Population over 15, by Industry, Labor Force, Unemployment Rate,

Estimate Annual Average of Labor force by prefecture,

Estimate Annual Average of Unemployment Rate 1997-2005,

“Labor Force Statistics”, Statistics Bureau, Ministry of General Affairs



Labor Force by Age Group over 15, "Data Series, 2004" Kyoto Prefectural Government
 "Labor Force Statistics", Statistics Bureau, Ministry of General Affairs
 Unemployed Persons & Rate by Age, Sex, "Labor Force Statistics",
 Statistics Bureau, Ministry of General Affairs